



60 Cinnamon Teal Way
Youngsville, NC 27596

BALLINGER FARMS - BRUNSWICK

CONTACT OUR NEW HOME SPECIALISTS

MAGGIE & JESSICA

Call Us @ 910-405-8311

info@cavinessandcates.com



Priced

\$499,910

Elevation K

2,355 Sq Ft

2.0 Story

3 Beds

2.5 Baths

3 Car Garage

Primary Bedroom: Up

About 60 Cinnamon Teal Way

- The entrance of this 2 story home showcases a 2 story ceiling with hanging decorative light fixture.
- Eat-in kitchen with large island overlooking the great room, granite countertops in "New Caledonia", subway tile backsplash in "Arctic White" set in a brick pattern, white shaker cabinets, walk-in pantry, built-in desk space, and window over kitchen sink with views to the backyard; Stainless steel microwave, dishwasher, and gas range.
- Covered deck and grill deck creates the perfect outdoor space and is easily accessible through the

...Read More Online

About The Community.

Enjoy the quiet life with a direct route to both downtown Raleigh and charming downtown Wake Forest in Ballinger Farms. This established community features Caviness & Cates new construction homes on an array of wooded, spacious homesites from ½ to over 1 acre and home plans with 2 and 3 car garages. Find your place to call home in Ballinger Farms!

...Read More Online

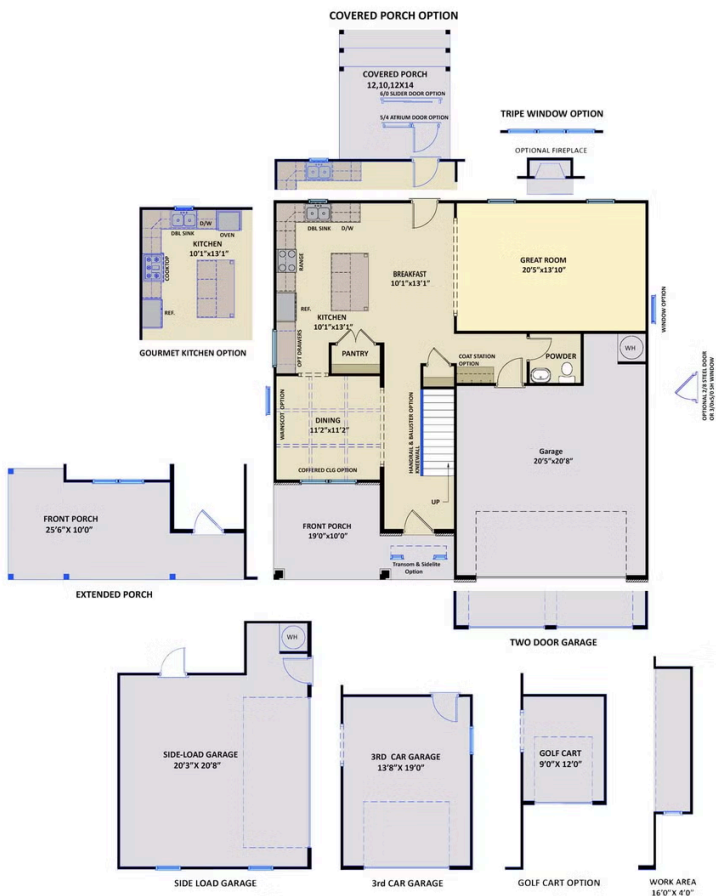
Prices, plans, dimensions, features, specifications, materials, and availability of homes or communities are subject to change without notice or obligation. Illustrations are artists depictions only and may differ from completed improvements. All prices subject to change without notice. Please contact your sales associate before writing an offer.



ARCHIVED 8/18/2023

The Brunswick CC2355

FIRST FLOOR



SECOND FLOOR

