



80 Cinnamon Teal Way
Youngsville, NC 27596

BALLINGER FARMS - DRAYTON

CONTACT OUR NEW HOME SPECIALISTS

MAGGIE & JESSICA

Call Us @ 910-405-8311

info@cavinessandcates.com



Priced

\$465,000

Elevation F - ARCHIVED 3/29/23

2,325 Sq Ft

2.0 Story

4 Beds

2.5 Baths

3 Car Garage

Primary Bedroom: Up

About 80 Cinnamon Teal Way

- First floor with formal dining room painted in Sherwin Williams "Tin Lizzie" with picture frame wainscoting detail and coffered ceiling.
- Kitchen is open to breakfast area and great room and has an island, white shaker cabinets, quartz countertops in "New Willow White", subway tile backsplash in "Arctic White" set in a brick pattern, corner pantry; Stainless steel microwave, dishwasher, and gas range.
- Covered deck and grill deck makes the perfect outdoor space and is easily accessible through the breakfast area.

...Read More Online

About The Community.

Enjoy the quiet life with a direct route to both downtown Raleigh and charming downtown Wake Forest in Ballinger Farms. This established community features Caviness & Cates new construction homes on an array of wooded, spacious homesites from ½ to over 1 acre and home plans with 2 and 3 car garages. Find your place to call home in Ballinger Farms!

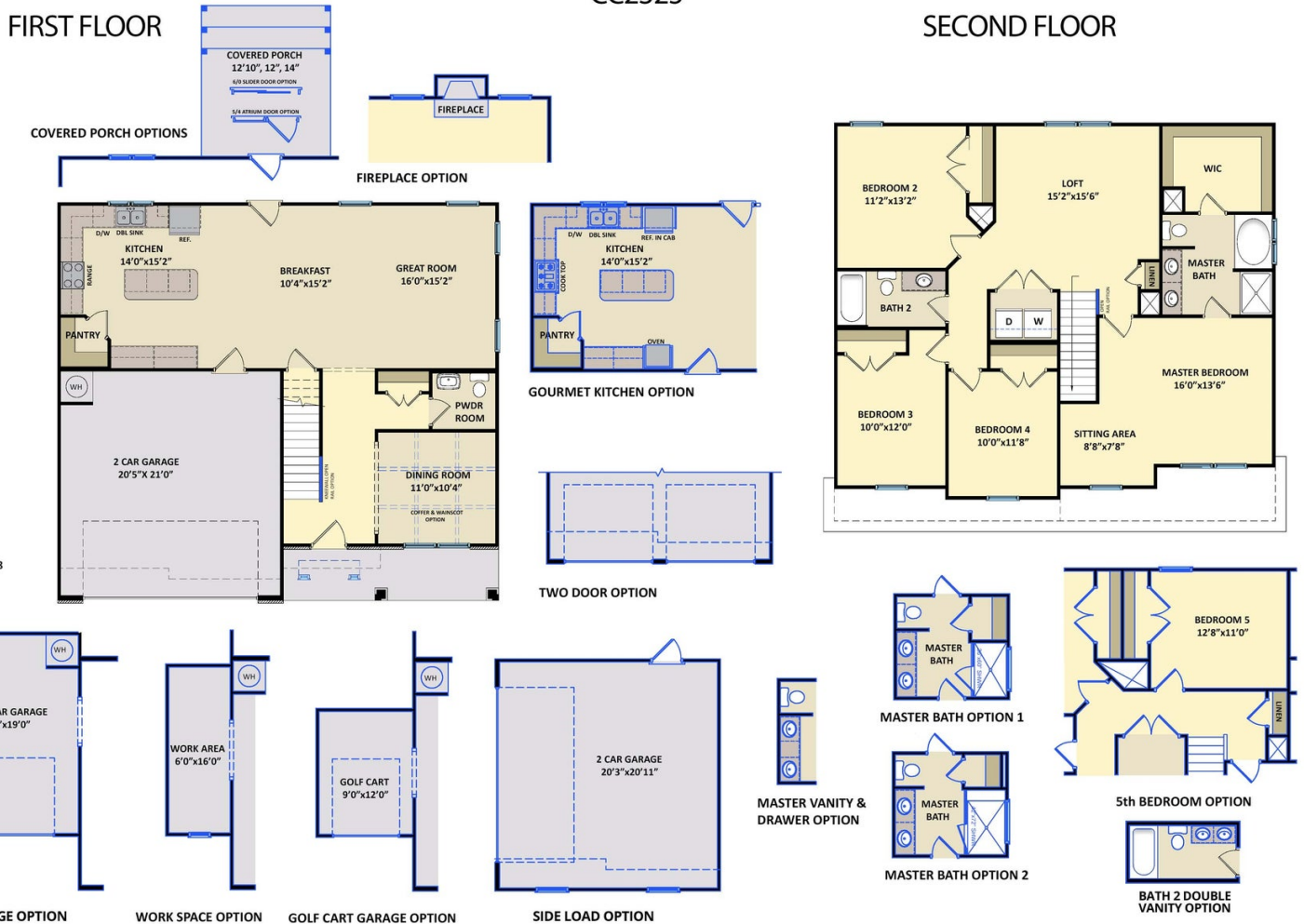
...Read More Online

Prices, plans, dimensions, features, specifications, materials, and availability of homes or communities are subject to change without notice or obligation. Illustrations are artists depictions only and may differ from completed improvements. All prices subject to change without notice. Please contact your sales associate before writing an offer.



ARCHIVED 3/2/2022

The Drayton
CC2325



Prices, plans, dimensions, features, specifications, materials, and availability of homes or communities are subject to change without notice or obligation. Illustrations are artists depictions only and may differ from completed improvements. All prices subject to change without notice. Please contact your sales associate before writing an offer.