



90 Cinnamon Teal Way
Youngsville, NC 27596

BALLINGER FARMS - BLADEN

CONTACT OUR NEW HOME SPECIALISTS

MAGGIE & JESSICA

Call Us @ 910-405-8311

info@cavinessandcates.com



Priced

\$498,900

Elevation F

3,142 Sq Ft

2.0 Story

4 Beds

3.0 Baths

3 Car Garage

Master Bedroom: Down

About 90 Cinnamon Teal Way

- Formal dining room painted in Sherwin Williams "Oyster Bay" with coffered ceiling and picture frame wainscoting detail.
- Formal flex room with french door entry.
- Great room with corner gas fireplace with decorative mantle and granite surround in "Absolute Black".
- Kitchen open to great room with breakfast area and island, white shaker cabinets, granite countertops in "New Caledonia", and subway tile backsplash in "Arctic White" set in a brick pattern;

...Read More Online

About The Community.

Enjoy the quiet life with a direct route to both downtown Raleigh and charming downtown Wake Forest in Ballinger Farms. This established community features Caviness & Cates new construction homes on an array of wooded, spacious homesites from ½ to over 1 acre and home plans with 2 and 3 car garages. Find your place to call home in Ballinger Farms!

...Read More Online

Prices, plans, dimensions, features, specifications, materials, and availability of homes or communities are subject to change without notice or obligation. Illustrations are artists depictions only and may differ from completed improvements. All prices subject to change without notice. Please contact your sales associate before writing an offer.

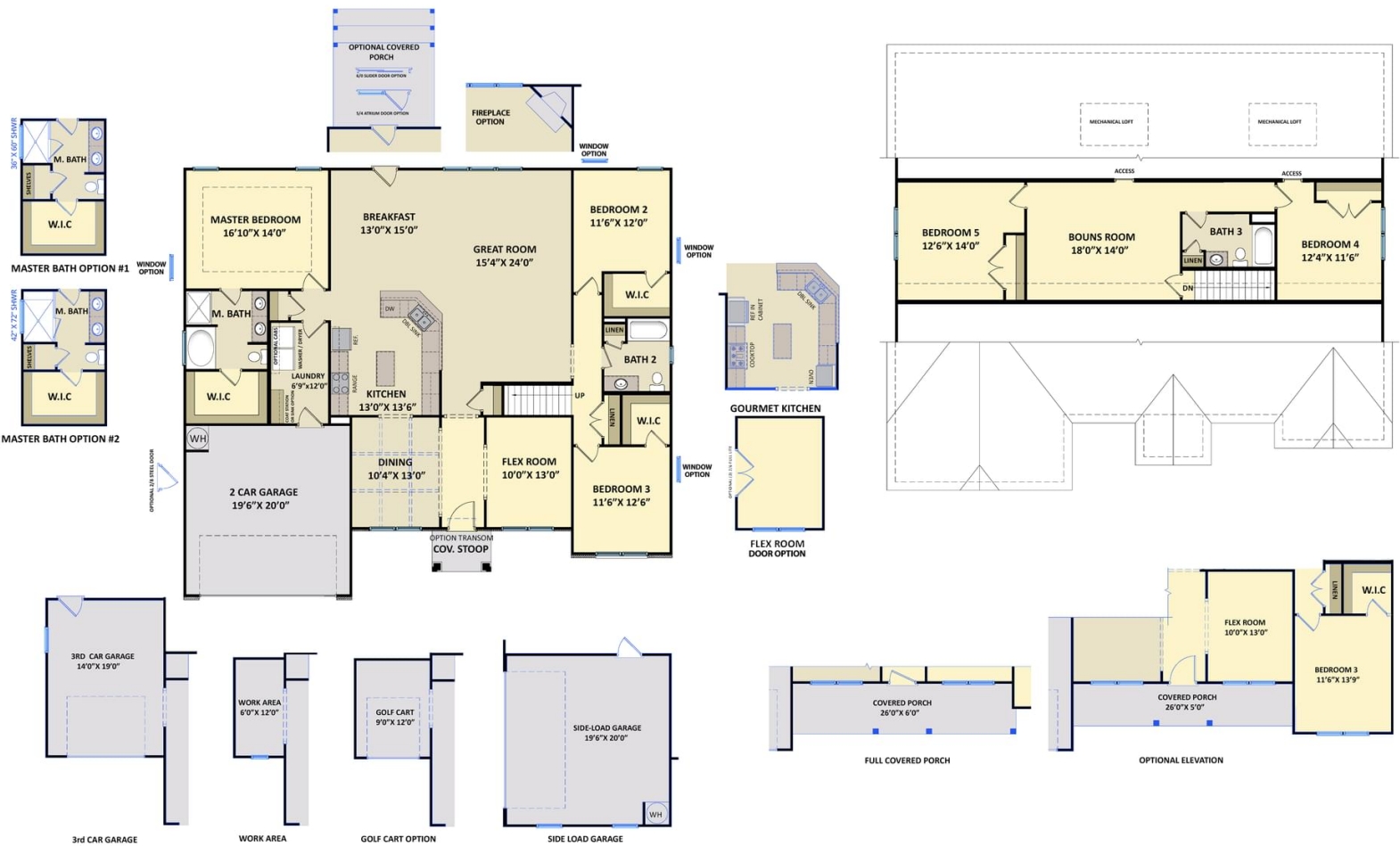


The Bladen

CC3107

FIRST FLOOR

SECOND FLOOR



Prices, plans, dimensions, features, specifications, materials, and availability of homes or communities are subject to change without notice or obligation. Illustrations are artists depictions only and may differ from completed improvements. All prices subject to change without notice. Please contact your sales associate before writing an offer.

