



95 Cinnamon Teal Way
Youngsville, NC 27596

BALLINGER FARMS - CAMBRIDGE

CONTACT OUR NEW HOME SPECIALISTS

MAGGIE & JESSICA

Call Us @ 910-405-8311

info@cavinessandcates.com



Priced

\$452,352

Elevation C

2,432 Sq Ft

1.5 Story

4 Beds

3.0 Baths

3 Car Garage

Master Bedroom: Down

About 95 Cinnamon Teal Way

This home features a bonus room upstairs and sits on a .82 acre homesite!

- Great room with gas fireplace
- Open kitchen with white shaker cabinets, granite countertops, arctic white subway tile backsplash, stainless microwave, dishwasher, and gas range, breakfast area with views to the backyard
- First-floor laundry room with linen closet
- Covered porch and grill patio in the backyard
- Master suite on first floor with beautiful tray ceiling with crown molding, walk-in closet, master bath

...Read More Online

About The Community.

Enjoy the quiet life with a direct route to both downtown Raleigh and charming downtown Wake Forest in Ballinger Farms. This established community features Caviness & Cates new construction homes on an array of wooded, spacious homesites from ½ to over 1 acre and home plans with 2 and 3 car garages. Find your place to call home in Ballinger Farms!

...Read More Online

Prices, plans, dimensions, features, specifications, materials, and availability of homes or communities are subject to change without notice or obligation. Illustrations are artists depictions only and may differ from completed improvements. All prices subject to change without notice. Please contact your sales associate before writing an offer.

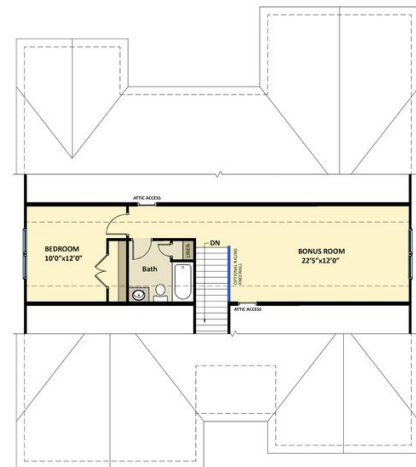


The Cambridge CC1850

FIRST FLOOR



SECOND FLOOR



Prices, plans, dimensions, features, specifications, materials, and availability of homes or communities are subject to change without notice or obligation. Illustrations are artists depictions only and may differ from completed improvements. All prices subject to change without notice. Please contact your sales associate before writing an offer.